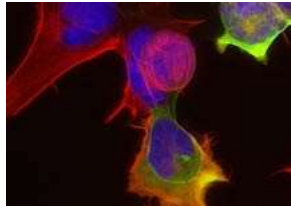


ALL-IN-ONE FLUORESCENCE MICROSCOPE



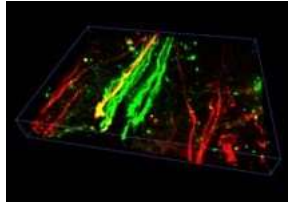
Fully automated epifluorescence microscope



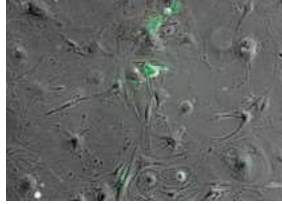
Inverted phase contrast microscope



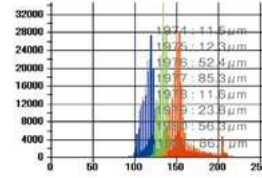
Brightfield microscope



Confocal microscope



Live cell incubation microscope



Cell counter/plate screener

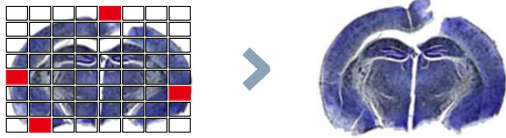


BZ-X800

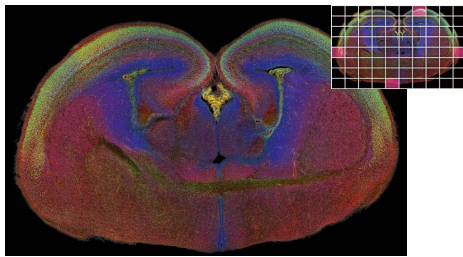


CONFIGURATIONS

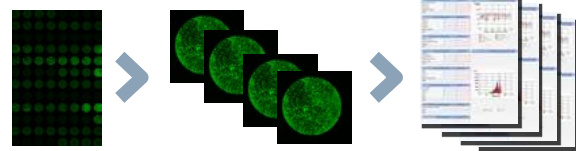
- STITCHING/SCREENING



- Stitch entire tissue sections, well-plates, and dishes.
- Combine with Z-stack to capture fully-focused images of entire specimen.

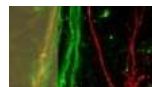


- AUTOMATED QUANTIFICATION

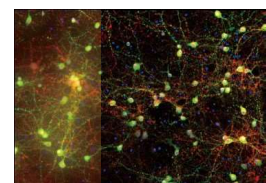
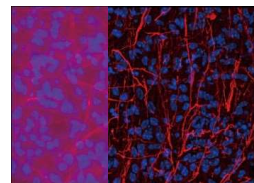
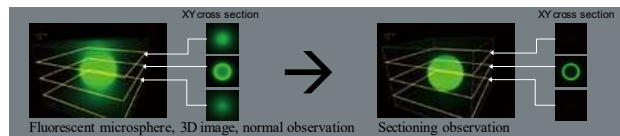


- Automatically count and measure cells/nuclei
- Analyze brightfield, phase contrast, and fluorescence images
- Batch analyze up to 400 files

- OPTICAL SECTIONING



- Confocal-grade images in a fraction of the time.
- Much less damage to specimen.
- 3D analysis is possible.



- TIME-LAPSE IMAGING



- Incubation chamber mounts directly inside.
- Minimizes photobleaching.
- Automatic focus tracking and flexible settings dramatically increase experiment success rate.

Thursday August 24th, 2023
 Room 429, Life Sciences North, SE corner of the 4th floor
<https://map.arizona.edu/221>
 11 am – 3 pm
 Onsite Sample Testing Available!